

# Treatment and Survival Outcomes of Waldenstrom Macroglobulinemia in Latin American Patients: A Multinational Retrospective Cohort Study

Eloísa Riva, MD, MEd<sup>1</sup>; Patricio José Duarte, MD<sup>2</sup>; Bryan Valcárcel, MD<sup>3</sup>; Guillermina Remaggi, MD<sup>4</sup>; Ivan Murrieta, MD<sup>5</sup>; Ariel Corzo, MD<sup>6</sup>; Daniel del Carpio, MD<sup>7</sup>; Camila Peña, MD<sup>8</sup>; Jule Vásquez, MD<sup>9</sup>; Virginia Bove, MD<sup>10</sup>; Larissa Teixeira, MD<sup>11</sup>; Guilherme Fleury-Perini, MD, MSc<sup>11</sup>; Sebastian Yantorno, MD<sup>12</sup>; César Samánez, MD<sup>13</sup>; Sergio Lopresti, MD<sup>14</sup>; Milagros Altamirano, MD<sup>15</sup>; Luis Villela, MD<sup>16</sup>; Guillermo J. Ruiz-Arguelles MD<sup>5</sup>; Guillermo J. Ruiz-Delgado, MD<sup>5</sup>; Efreem Montañón, MD<sup>17</sup>; Verónica Verri, MD<sup>18</sup>; Elia Zamora Pérez, MD<sup>19</sup>; Fernando Pérez Jacobo, MD<sup>20</sup>; Henry Idrobo, MD<sup>21</sup>; Humberto Martínez-Cordero, MD<sup>22</sup>; Brady E. Beltran, MD<sup>23</sup>; Jhoanna Ramírez, MD<sup>24</sup>; Jorge J. Castillo, MD<sup>25</sup>; and Luis E. Malpica Castillo, MD<sup>26</sup>

**PURPOSE** Waldenstrom Macroglobulinemia (WM) is a rare lymphoma with distinct clinical features, and data from Latin American patients are lacking. Therefore, we aim to investigate the clinical, therapy, and outcome patterns of WM in Latin America.

**METHODS** We retrospectively analyzed patients with WM diagnosed between 1991 and 2019 from 24 centers in seven Latin American countries. The study outcomes were overall survival (OS) and progression-free survival (PFS).

**RESULTS** We identified 159 cases (median age 67 years, male 62%). Most patients (95%) were symptomatic at diagnosis. The International Prognostic Scoring System for WM (IPSSWM) at diagnosis was available in 141 (89%) patients (high-risk 40%, intermediate-risk 37%, and low-risk 23%). Twenty-seven (17%) patients were tested for MYD88<sup>L265P</sup>, with 89% (n = 24 of 27) carrying the mutation. First-line and second-line therapies were administered to 142 (89%) and 53 (33%) patients, respectively. Chemoimmunotherapy was the most commonly used first-line (66%) and second-line (45%) approach; only 18 (11%) patients received ibrutinib. With a median follow-up of 69 months, the 5-year OS rate was 81%. In treated patients, the 5-year OS and PFS rates were 78% and 59%, respectively. High-risk IPSSWM at treatment initiation was an independent risk factor for OS (adjusted hazard ratio: 4.73, 95% CI, 1.67 to 13.41, *P* = .003) and PFS (adjusted hazard ratio: 2.43, 95% CI, 1.31 to 4.50, *P* = .005).

**CONCLUSION** In Latin America, the management of WM is heterogeneous, with limited access to molecular testing and novel agents. However, outcomes were similar to those reported internationally. We validated the IPSSWM score as a prognostic factor for OS and PFS. There is an unmet need to improve access to recommended diagnostic approaches and therapies in Latin America.

JCO Global Oncol 8:e2100380. © 2022 by American Society of Clinical Oncology

Creative Commons Attribution Non-Commercial No Derivatives 4.0 License

## ASSOCIATED CONTENT

### Data Supplement

Author affiliations and support information (if applicable) appear at the end of this article.

Accepted on June 3, 2022 and published at [ascopubs.org/journal/go](https://ascopubs.org/journal/go) on August 8, 2022; DOI <https://doi.org/10.1200/GO.21.00380>

## INTRODUCTION

Waldenström macroglobulinemia (WM) is an indolent B-cell lymphoma characterized by a monoclonal immunoglobulin M (IgM) paraprotein in the serum and bone marrow infiltration by malignant lymphoplasmacytic cells.<sup>1</sup> WM is a rare disease with an estimated incidence of 0.34-0.73 among males and 0.17-0.42 among females per 100,000 persons per year in the United States.<sup>2</sup> The incidence of WM in Latin America is unknown. Clinically, WM may present with constitutional symptoms (ie, fever, night sweats, and unintentional weight loss), cytopenias, lymphadenopathy, organomegaly, neuropathy, hemolytic

anemia, and hyperviscosity. Consensus guidelines recommend treatment initiation only in symptomatic patients.<sup>3,4</sup>

The most frequent cytogenetic alteration in WM is the partial loss of the long arm of chromosome 6 (30%-54%), which is associated with a worse prognosis.<sup>5</sup> The introduction of whole-genome and next-generation sequencing allowed the detection of somatic activating mutations in the *MYD88* and *CXCR4* genes, which can be detected in approximately 90% and 40% of WM cases, respectively.<sup>6</sup> Several studies have reported the impact of these mutations in the prognosis and therapy responses in WM.<sup>7-9</sup>

## CONTEXT

### Key Objective

How does Waldenström Macroglobulinemia (WM) present in Latin America and what are the most used therapeutic patterns?

### Knowledge Generated

In Latin America, the management of WM is heterogeneous, with limited access to molecular testing and novel agents. However, outcomes were similar to those reported internationally. We validated the International Prognostic Scoring System for WM score as a prognostic factor for overall survival and progression-free survival.

### Relevance

To our knowledge, this is the first Latin American study to provide real-world data on WM. The International Prognostic Scoring System for WM was validated in our population. There is a need for improvement in diagnostic approaches and access to novel therapies in our region.

Despite the advent of novel therapeutic strategies, WM remains incurable. A consensus panel has recently updated recommendations for the management of symptomatic WM after the 10<sup>th</sup> International Workshop for WM.<sup>10</sup> However, the treatment approaches used to manage WM outside of clinical trials are heterogeneous. Because data on WM in Latin America are lacking, two Latin American research groups (Grupo de Estudio Latinoamericano de Linfoproliferativos-GELL and Grupo de Estudio Latinoamericano de Mieloma Múltiple-GELAMM) conducted a retrospective review of patients with WM from the region to better understand the clinical, therapy, and outcome patterns of Latin American patients with WM.

## METHODS

### Patients

We conducted an international, multicenter, retrospective cohort study of patients diagnosed with WM in 24 centers from seven Latin American countries between January 1991 and December 2019 (Data Supplement). We reviewed the medical records of individuals age  $\geq 18$  years diagnosed using the criteria of the eighth IWWM.<sup>11</sup> The Institutional Review Board of each participating center approved this study.

### Clinical Data and Risk Stratification

The demographic and clinical data collected at diagnosis included age, sex, presence of lymphadenopathy, splenomegaly, hepatomegaly, bone marrow infiltration, peripheral neuropathy, and hyperviscosity symptoms (not explained otherwise, epistaxis and headaches). Laboratory data included complete blood cell count, serum creatinine, serum  $\beta 2$  microglobulin, serum albumin, serum lactate dehydrogenase, serum ferritin, IgM, IgG, IgA, and the presence of a monoclonal protein in serum protein electrophoresis and immunofixation (SPEP/IFX). When available, results from cytogenetic and mutational analyses for *MYD88* and *CXCR4* mutations were collected. The International Prognostic Scoring System for WM (IPSSWM) was used for risk stratification.<sup>12</sup> We also categorized patients

according to the type of treating institution (ie, public v private hospitals).

### Therapy Approaches and Response Criteria

The therapy approaches used during the first or subsequent lines were divided as follows: monotherapy (ie, rituximab, chlorambucil, fludarabine, cyclophosphamide, ibrutinib, and thalidomide), chemoimmunotherapy (rituximab plus chemotherapy), and others. The overall response rate (ORR) was defined as the sum of minor response ( $\geq 25\%$  but  $< 50\%$  reduction in serum IgM levels), partial response (PR,  $\geq 50\%$  but  $< 90\%$  reduction), very good partial response (VGPR,  $\geq 90\%$  reduction or normalization of serum IgM with a persistent monoclonal spike in SPEP/IFX), and complete response (normalization of serum IgM and SPEP/IFX and absence of bone marrow and extramedullary disease).<sup>13</sup> The major response rate (MRR) was defined as the sum of PR, VGPR, and complete response.

### Outcomes and Statistical Analysis

We used descriptive statistics to summarize all variables. The primary study outcome was overall survival (OS), defined as the time between diagnosis and death from any cause, loss to follow-up, or end of the study (November 2020). The secondary outcome was progression-free survival (PFS) after frontline, defined as the time from the date of treatment initiation until first relapse, loss to follow-up, death from any cause, or end of the study, whichever occurs first. Differences between groups were identified using the chi-square or Fisher's exact test, as appropriate.

Survival probabilities were estimated using the Kaplan-Meier method, and the difference between groups was computed using the log-rank test. We estimated proportional hazard ratios (HRs) for OS and PFS with a 95% CI using univariate and multivariate Cox proportional hazard regression models. Two models were constructed to assess the confounding effect of different predictors in the primary and secondary outcomes. The first model included the IPSSWM score at treatment initiation and rituximab use.

The second model included the previous variables plus sex and the type of treating institution. In the regression analysis, patients with low-risk and intermediate-risk IPSSWM scores were grouped into a low-intermediate risk category given the low count in the low-risk group. The variables in our models were selected on the basis of priori assumptions of their public health and clinical relevance regarding survival outcomes rather than their significance in the univariate analysis.<sup>12</sup> The hazard assumption was tested by plotting Schoenfeld residuals. All feasible two-way interactions between the included variables in both OS and PFS models were assessed in Cox regression analyses. We did not find any significant interaction. Sensitivity analyses were performed in patients with a follow-up of at least 5 years ( $n = 105$ ). The 95% CI of the response rates was estimated using the Clopper-Pearson method. Outcomes with a  $P$  value  $< .05$  were considered statistically significant. We used the R software for analysis.

## RESULTS

### Demographic and Clinical Features

A total of 159 patients with WM were identified. Table 1 summarizes the demographic and clinical features of the patients. At diagnosis, the median age was 67 (range, 24–89) years with a male predominance (62%). Fifty-two percent of the patients were treated in private centers, and 48% in public centers. Most patients ( $n = 151$ , 95%) were symptomatic at diagnosis with symptomatic adenopathy (28%), symptomatic splenomegaly (25%), and hyperviscosity symptoms (20%) as the most common symptoms. The IPSSWM score was available in 141 patients, of whom 40%, 37%, and 23% were classified as high-risk, intermediate-risk, and low-risk disease, respectively. Most patients had anemia (hemoglobin  $\leq 11.5$  g/dL; 71%) at the time of diagnosis. Serum IgM levels  $> 7$  g/dL and bone marrow involvement of  $\geq 50\%$  were seen in 22% of patients each.

Overall, molecular testing was performed in 21% ( $n = 23$  of 159) of the patients (27% in private and 16% in public centers,  $P = .146$ ). *MYD88*<sup>L265P</sup> testing was performed in 17% ( $n = 27$  of 159), del17p in 6% ( $n = 9$  of 159), and *CXCR4* in 1% ( $n = 1$  of 159). For those in whom genetic testing was performed, 89% ( $n = 24$  of 27) had *MYD88*<sup>L265P</sup> mutation, none had del17p mutation, and the only patient tested for *CXCR4* mutation had *MYD88*<sup>L265P</sup> and *CXCR4* mutations (Data Supplement).

### Therapy Approaches and Responses

Figure 1 shows the therapy patterns during the three lines of therapy.

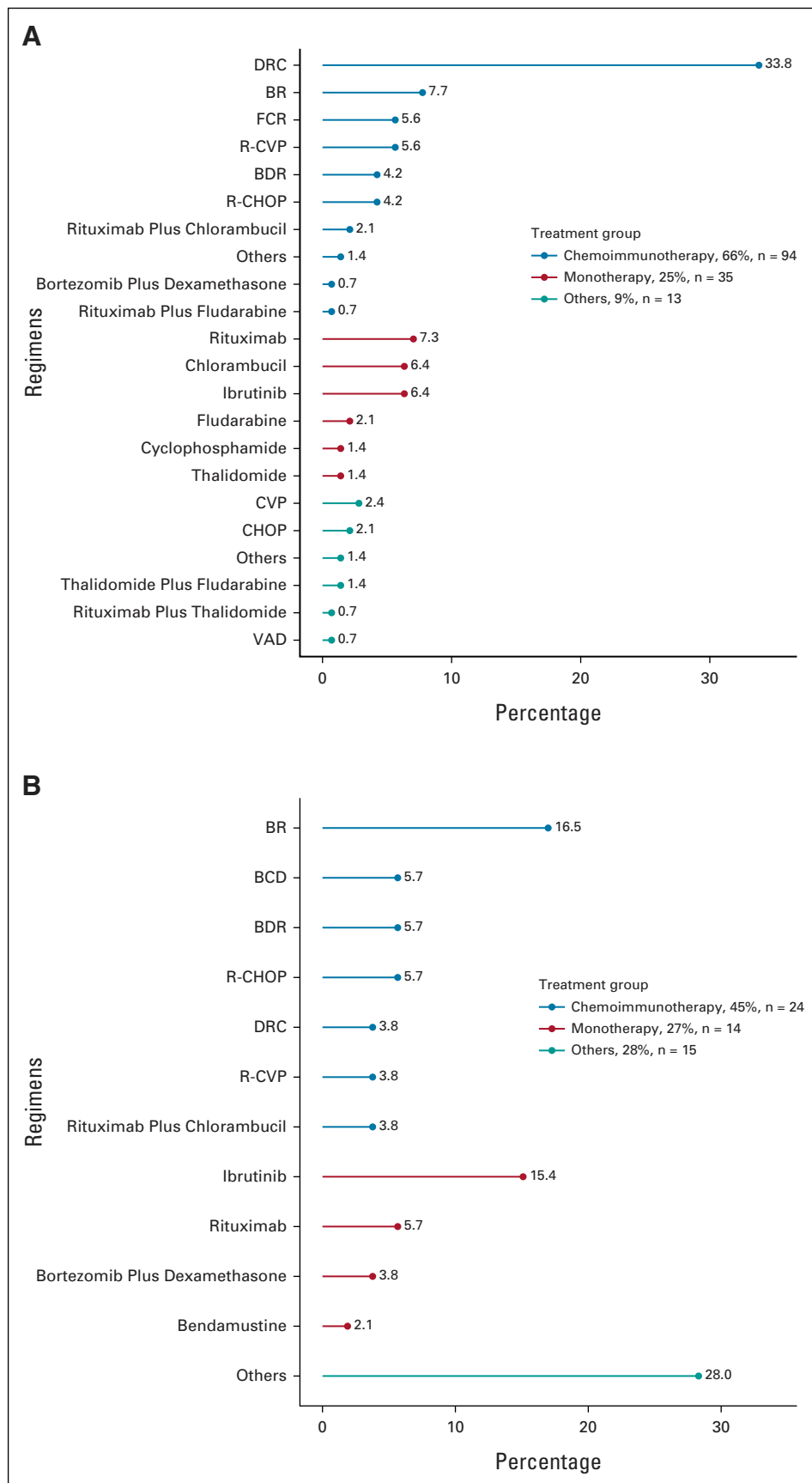
First-line therapy was administered to 142 (89%) patients. Chemotherapy (n = 94 of 142, 66%) was the most frequently used first-line therapy, followed by monotherapy ( $n = 35$  of 142, 25%). Combination of dexamethasone, rituximab, and cyclophosphamide (DRC) was the most

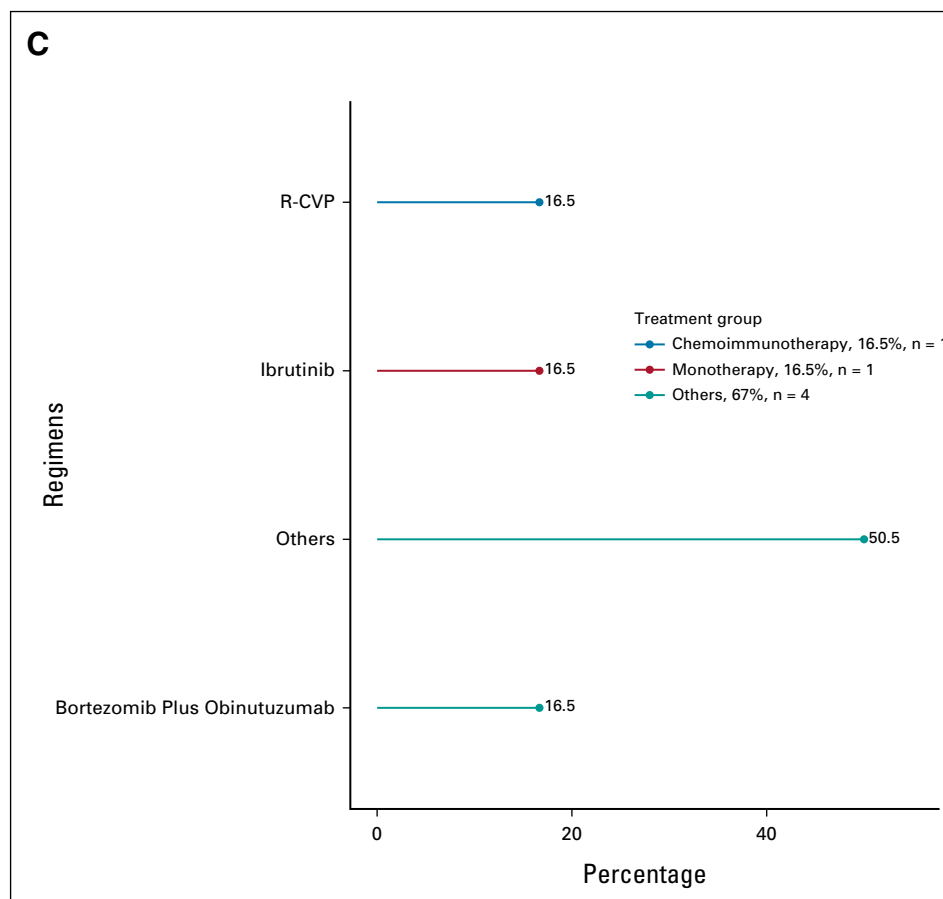
**TABLE 1.** Demographic and Clinical Features and Outcomes of Latin American Patients With Waldenström Macroglobulinemia

Characteristic	Overall, No. (%)	Missing (%)
No. of patients	159	—
Country		0
Argentina	55 (35)	
Peru	32 (20)	
Mexico	28 (18)	
Chile	15 (9)	
Uruguay	13 (8)	
Colombia	10 (6)	
Brazil	6 (4)	
Type of insurance		0
Private	83 (52)	
Public	76 (48)	
Sex, male	99 (62)	0
Period of diagnosis		0
1991–2000	11 (7)	
2001–2010	39 (24)	
2011–2020	109 (69)	
Age at diagnosis, years, median (range)	67 (24–89)	0
Age at diagnosis $> 65$ years	87 (55)	0
Symptoms at diagnosis		
Symptomatic adenopathy	44 (28)	0
Symptomatic splenomegaly	40 (25)	0
Hyperviscosity symptoms	32 (20)	0
B symptoms	28 (18)	0
Symptomatic hepatomegaly	20 (13)	0
Peripheral neuropathy	18 (11)	0
Bleeding	4 (3)	0
IPSSWM score at diagnosis (n = 141)		11
Low	32 (23)	
Intermediate	52 (37)	
High	57 (40)	
Hemoglobin $\leq 11.5$ g/dL (n = 149)	105 (71)	6
Platelet count $\leq 100 \times 10^9/L$ (n = 154)	27 (18)	3
B2 microglobulin $> 3$ mg/L (n = 116)	74 (64)	27
IgM $> 7$ g/dL (n = 147)	33 (22)	8
Albumin $< 3.5$ g/dL (n = 138)	64 (46)	13
LDH—high (n = 138)	29 (21)	13
Bone marrow involvement $\geq 50\%$ (n = 107)	24 (22)	33
Cancer-directed therapy	142 (89)	0

Abbreviations: B2, Beta-2; IgM, immunoglobulin M; IPSSWM, International Prognostic Scoring System for WM; LDH, lactate dehydrogenase.

**FIG 1.** Therapy approaches used during (A) first-line (n = 142), (B) second-line (n = 53), and (C) third-line (n = 6) settings. BCD, bortezomib-cyclophosphamide-dexamethasone; BDR, bortezomib-dexamethasone-rituximab; BR, bendamustine-rituximab; CHOP, cyclophosphamide, doxorubicin, vincristine, and prednisone; CVP, cyclophosphamide, vincristine, and prednisone; DRC, dexamethasone, rituximab, and cyclophosphamide; FCR, fludarabine-cyclophosphamide-rituximab; R-CHOP, rituximab plus cyclophosphamide, doxorubicin, vincristine, and prednisone; R-CVP, rituximab plus cyclophosphamide, vincristine, and prednisone; VAD, vincristine-doxorubicin-dexamethasone.





**FIG 1.** (Continued).

frequently used regimen (34%,  $n = 48$  of 142). First-line therapy was heterogeneous among countries. Chemoimmunotherapy was more commonly used in Chile (80%), Uruguay (80%), and Argentina (74%) than Peru (58%) or Mexico (46%). Monotherapy use ranged from 7% in Chile to 40% in Mexico (Data Supplement). Neither patient's age ( $P = .63$ ) nor IPSSWM risk score ( $P = .94$ ) influenced the clinician's decision on the first-line therapy approach used. However, chemoimmunotherapy was more frequently administered at private institutions (74%  $v$  58%,  $P = .03$ ), with an upward trend from 16% in the 1991-2010 period to 83% in the 2011-2020 period ( $P < .001$ ; Data Supplement). The median time to first-line therapy initiation was 35 days (range 0-15 years). Second-line therapy was administered to 53 patients; chemoimmunotherapy (45%) was the most commonly used approach. Bendamustine plus rituximab (17%) and monotherapy with ibrutinib (15%) were the most frequently used regimens. Six patients received third-line therapy, and one patient received fourth-line therapy. Maintenance rituximab was given to 13 ( $n = 13$  of 137, 10%) patients and only after first-line therapy. Ibrutinib was used in 18 (11%) patients anytime during the disease process (14% in private and 12% in public centers,  $P = .946$ ). Intrathecal chemotherapy was given to five ( $n = 5$  of 142, 4%) patients. Four patients

underwent autologous stem-cell transplantation (ASCT) after failing first-line therapy. All but one received a melphalan-based conditioning regimen and remained disease-free (PFS 24, 48, and 60 months, respectively). The fourth patient did not have enough data to be analyzed.

**Table 2** summarizes the clinical features and responses of patients who received therapy. Most patients had an intermediate-risk (41%) or high-risk (43%) IPSSWM score at therapy initiation. The ORR to first-line therapy was 86% (95% CI, 79 to 92), and the MRR was 85% (95% CI, 77 to 91). No differences were seen in ORR (83%, 95% CI, 70 to 93  $v$  88%, 95% CI, 79 to 94;  $P = .62$ ) and MRR (81%, 95% CI, 67 to 91  $v$  87%, 95% CI, 77 to 94;  $P = .56$ ) between patients managed at private versus public centers, respectively. The ORR and MRR in patients who received the first-line chemoimmunotherapy regimen was 86% ( $n = 107$  of 124; 95% CI, 59 to 77) and 84% ( $n = 105$  of 124; 95% CI, 60 to 78), respectively (Data Supplement).

In the subset of patients with *MYD88*<sup>L265P</sup> mutation who received therapy (chemoimmunotherapy  $n = 15$  and ibrutinib  $n = 5$ ), the ORR, MRR, and VGPR rates were 100%, 95%, and 15%, respectively (Data Supplement). The ORR in the five patients treated with ibrutinib was

**TABLE 2.** Demographic and Clinical Features and Outcomes of Latin American Patients With Waldenstrom Macroglobulinemia According to the Treating Institution

Characteristic	Overall, No. (%)	Treating institutions, No. (%)		P	Missing (%)
		Public	Private		
No. of patients	142	66	76		
Period of treatment initiation (n = 137)				.001	3.5
1991-2000	9 (7)	9 (15)	0 (0)		
2001-2010	30 (22)	15 (24)	15 (20)		
2011-2020	98 (71)	38 (61)	60 (80)		
IPSSWM score at treatment (n = 111)				.779	21.8
Low	18 (16)	8 (19)	10 (14)		
Intermediate	45 (41)	18 (42)	27 (40)		
High	48 (43)	17 (39)	31 (46)		
Age > 65 years at treatment (n = 137)	77 (56)	35 (57)	42 (56)	1.000	3.5
Hemoglobin $\leq$ 11.5 g/dL (n = 130)	108 (83)	49 (88)	59 (80)	.350	8.5
Platelet count $\leq$ 100 $\times$ 10 <sup>9</sup> /L (n = 130)	123 (95)	56 (100)	67 (91)	.019	8.5
B2 microglobulin > 3 mg/L (n = 90)	63 (70)	28 (76)	35 (66)	.454	36.6
IgM > 7 g/dL (n = 107)	19 (18)	4 (10)	15 (22)	.188	24.6
Intrathecal chemotherapy (n = 140)	5 (4)	4 (6)	1 (1)	.178	1.4
Maintenance rituximab (n = 137)	13 (10)	6 (10)	7 (9)	1.000	3.5
First-line regimen				.031	0
Chemoimmunotherapy	94 (66)	38 (58)	56 (74)		
Monotherapy	35 (25)	23 (35)	12 (16)		
Others	13 (9)	5 (7)	8 (10)		
Treatment response—ORR (n = 124)	107 (86)	40 (83)	67 (88)	.622	12.7
Treatment response—MRR (n = 124)	105 (84)	39 (81)	66 (87)	.558	12.7
Treatment response (n = 124)				.567	12.7
CR	20 (16)	7 (15)	13 (17)		
PR	66 (53)	27 (56)	39 (51)		
VGPR	19 (15)	5 (10)	14 (19)		
MR	2 (2)	1 (2)	1 (1)		
SD	7 (6)	2 (4)	5 (7)		
PD	10 (8)	6 (13)	4 (5)		
First relapse at 5 years	38 (27)	11 (17)	27 (36)	.019	0
Mortality at 5 years	29 (20)	12 (18)	17 (22)	.683	0

Abbreviations: B2, Beta-2; CR, complete response; IgM, immunoglobulin M; IPSSWM, International Prognostic Scoring System for WM; MR, minor response; MRR, major response rate; ORR, overall response rate; PD, progressive disease; PR, partial response; SD, stable disease; VGPR, very good partial response.

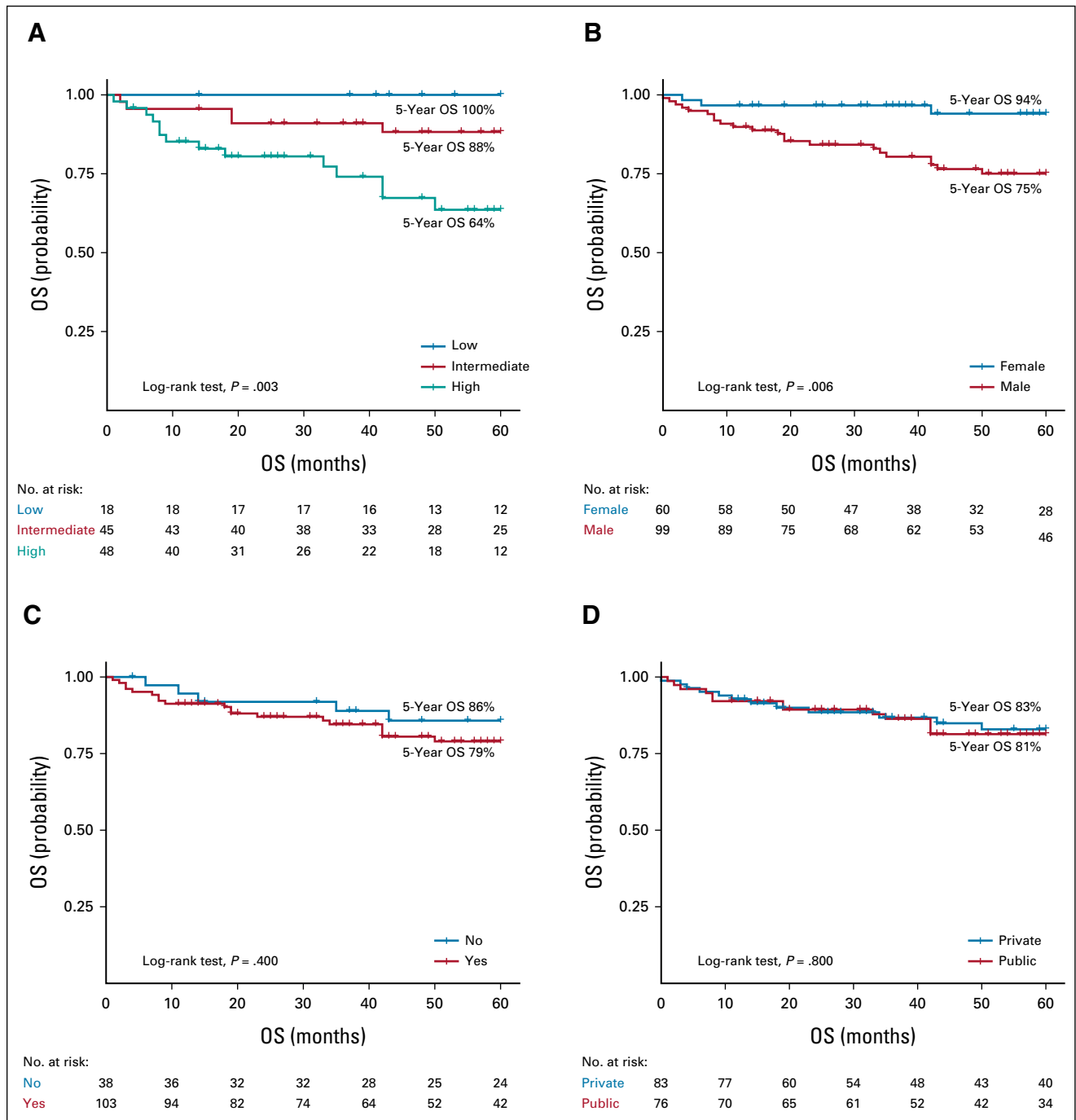
100%, of whom four (80%) achieved PR and one (20%) attained a VGPR. The one patient with *CXCR4* mutation received ibrutinib and attained a PR.

### Disease Outcomes

With a median follow-up of 69 months (95% CI, 59 to 90), the overall 5-year OS was 81% (95% CI, 76 to 89) and the median OS was not reached. In patients who received therapy, the 5-year OS and PFS rates were 78% (95% CI, 70 to 86) and 59% (95% CI, 50 to 69), respectively, with median survival times not reached for both outcomes.

Worse 5-year OS ( $P = .003$ ) and PFS ( $P = .004$ ) rates were seen in patients with a high-risk IPSSWM score (OS: 64%; PFS: 35%) compared with patients with intermediate-risk (OS: 88%; PFS: 59%) and low-risk (OS: 100%; PFS: 82%) diseases (Figs 2 and 3). Males had worse 5-year OS (75% v 94%,  $P = .006$ ) and PFS (50% v 72%,  $P = .004$ ) rates than females (Figs 2 and 3). The use of rituximab did not influence the survival estimates in the study periods of 2001-2010 (OS,  $P = .16$ ; PFS,  $P = .86$ ), 2011-2020 (OS,  $P = .73$ ; PFS,  $P = .73$ ), and 2001-2020 (OS,  $P = .32$ ; PFS,  $P = .69$ ; Data Supplement).

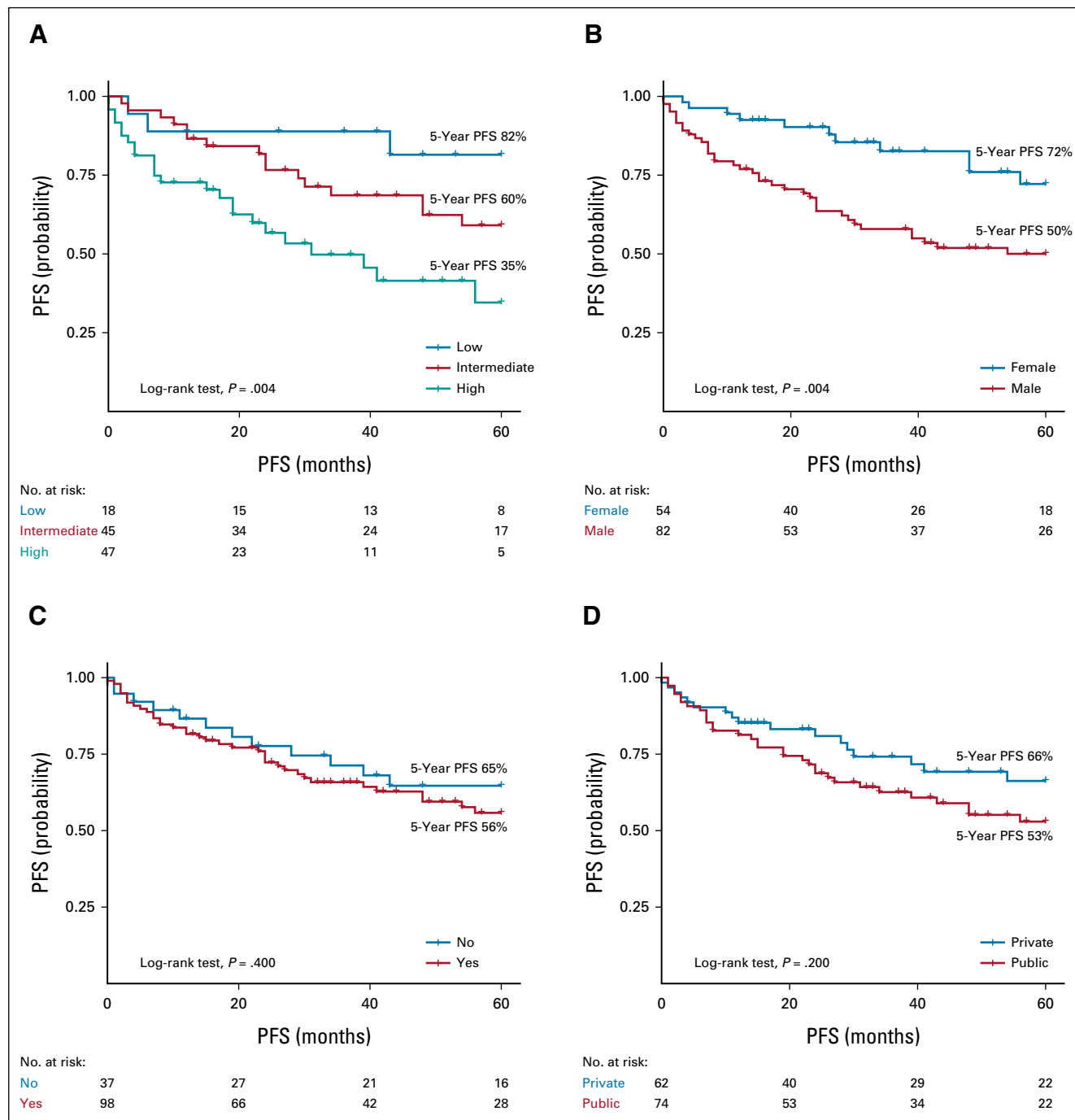




**FIG 2.** OS of patients with Waldenström Macroglobulinemia according to (A) treatment IPSSWM score, (B) sex, (C) rituximab use, and (D) type of treating institution. IPSSWM, International Prognostic Scoring System for WM; OS, overall survival.

In the univariate analysis, a high-risk IPSSWM at treatment initiation was a predictor of mortality (HR, 4.76, 95% CI, 1.71 to 13.28) and PFS (HR, 2.56, 95% CI, 1.39 to 4.70). After adjusting for sex, type of treating institution, and rituximab use, a high-risk IPSSWM score remained an independent risk factor for OS (adjusted hazard ratio [aHR], 4.73, 95% CI, 1.67 to 13.41,  $P = .003$ ) and PFS (aHR, 2.43, 95% CI, 1.31 to 4.50,  $P = .005$ ; Table 3). In addition, male sex was associated with mortality (aHR,

3.75, 95% CI, 1.08 to 13.04,  $P = .038$ ) and PFS (aHR, 2.64, 95% CI, 1.29 to 5.40,  $P = .008$ ; Table 3). This outcome was not modified by the IPSSWM score ( $P$  for interaction = .998), treatment period ( $P$  for interaction = .743), or treating institution ( $P$  for interaction = .904). In the sensitivity analysis, a high-risk IPSSWM was a predictor for mortality (aHR, 6.24, 95% CI, 2.19 to 17.82,  $P = .001$ ) and PFS (aHR, 3.77, 95% CI, 1.87 to 7.62,  $P < .001$ ; Data Supplement).



**FIG 3.** PFS of patients with Waldenstrom Macroglobulinemia according to (A) treatment IPSSWM score, (B) sex, (C) rituximab use, and (D) type of treating institution. IPSSWM, International Prognostic Scoring System for WM; PFS, progression-free survival.

After 5 years from diagnosis, 38 (26%) patients had relapsed and 29 (20%) had died. Cause of death was reported in 19 cases; the most common were infection ( $n = 7$ ) and disease progression/transformation to aggressive non-Hodgkin lymphoma ( $n = 5$ ).

## DISCUSSION

Herein, we describe the clinical features, therapy approaches, and survival outcomes of patients with WM

encountered in 24 centers from seven Latin American countries over the past three decades. We found that treatment patterns are heterogeneous with limited access to molecular testing and novel agents. Although chemoimmunotherapy was the most commonly used approach, there was heterogeneity in the choice of treatments across the countries. Nonetheless, the survival outcomes were comparable with those reported in high-income countries. In addition, the use of rituximab did not seem to have an



**TABLE 3.** Univariate and Multivariate Cox Regression Analyses of OS and PFS Predictors in Latin American Patients With Waldenström Macroglobulinemia

Predictor	Univariate Analysis		Multivariate Analysis			
			Model 1		Model 2	
OS	HR (95% CI)	P	aHR (95% CI)	P	aHR (95% CI)	P
Treatment IPSSWM score						
Low-intermediate	Ref	—	Ref	—	Ref	—
High	4.76 (1.71 to 13.28)	.003	4.86 (1.74 to 13.59)	.003	4.73 (1.67 to 13.41)	.003
Rituximab use						
No	Ref	—	Ref	—	Ref	—
Yes	1.53 (0.57 to 4.10)	.398	1.80 (0.52 to 6.21)	.351	2.46 (0.70 to 8.62)	.161
Sex						
Female	Ref	—	—	—	Ref	—
Male	4.66 (1.40 to 15.58)	.012	—	—	3.75 (1.08 to 13.04)	.038
Type of treating institution						
Private hospital	Ref	—	—	—	Ref	—
Public hospital	1.09 (0.50 to 2.39)	.828	—	—	1.02 (0.38 to 2.72)	.970
PFS						
Treatment IPSSWM score						
Low-intermediate	Ref	—	Ref	—	Ref	—
High	2.56 (1.39 to 4.70)	.003	2.55 (1.38 to 4.71)	.003	2.43 (1.31 to 4.50)	.005
Rituximab use						
No	Ref	—	Ref	—	Ref	—
Yes	1.29 (0.67 to 2.47)	.445	1.02 (0.49 to 2.14)	.954	1.24 (0.59 to 2.61)	.569
Sex						
Female	Ref	—	—	—	Ref	—
Male	2.58 (1.32 to 5.04)	.006	—	—	2.64 (1.29 to 5.40)	.008
Type of treating institution						
Private hospital	Ref	—	—	—	Ref	—
Public hospital	1.53 (0.85 to 2.76)	.155	—	—	1.18 (0.61 to 2.27)	.624

Abbreviations: aHR, adjusted hazard ratio; IPSSWM, International Prognostic Scoring System for WM; OS, overall survival; PFS, progression-free survival; ref, reference.

impact on patient outcomes. To the best of our knowledge, this is the first study that provides real-world data on WM in Latin America.

In our cohort, the median age at diagnosis was 67 years, with a slight male predominance. These features were similar to those reported in previous studies.<sup>14</sup> Less than 5% of our patients were asymptomatic during the initial presentation. This number is lower compared with historical data of 25%.<sup>1-3</sup> In this study, the most common indications for therapy were organomegaly, anemia, and hyperviscosity symptoms, with a median time to therapy initiation of 35 days. Although the reasons why our patients required early therapy are out of the scope of this work, we believe that delayed access to specialized cancer care by a saturated health care system might have contributed to the observed outcome. Indeed, a late diagnosis has been associated with a more aggressive course of the disease and a worse prognosis.<sup>15,16</sup>

The *MYD88*<sup>L265P</sup> mutation has been reported in more than 90% of patients with WM, allowing in some cases the distinction from other IgM-secreting malignancies.<sup>7</sup> The *CXCR4* mutation has been associated with a more aggressive course of the disease and resistance to ibrutinib.<sup>17</sup> In our study, most patients did not undergo molecular testing because of the lack of molecular laboratories in many of the participating institutions and its high cost. In addition, given that ibrutinib is not readily available in most Latin American countries, cytogenetics or mutational analysis does not influence clinicians' choice of therapy. Despite these caveats, ibrutinib therapy was associated with a high response rate in our patients, similar to reported clinical trials.<sup>18</sup>

There are few randomized trials comparing different regimens in WM. Thus, treatment recommendations follow retrospective studies and phase II trials. Real-world data from the United States showed that between 2009 and

2013, single-agent rituximab (45%) and purine analogs (15%) were the most frequently used frontline approaches.<sup>19</sup> In Europe, monotherapy (eg, chlorambucil, rituximab, and fludarabine) was the most frequent frontline approach (43%), whereas chemoimmunotherapy (predominantly rituximab plus cyclophosphamide, doxorubicin, vincristine, and prednisone) was used in 36% of patients.<sup>14</sup> In our study, chemoimmunotherapy was the most common approach in the first-line and second-line setting, often with dexamethasone, rituximab, and cyclophosphamide and bendamustine-rituximab, respectively. Bortezomib or ibrutinib was given to < 10% of our patients. In Latin America, both drugs require either institutional approval for reimbursement or the cost is borne by the patient, which might explain the low rate of use of these agents. We did not find differences in responses or outcomes between patients managed at private versus public institutions, which is not surprising considering that access to therapies is mostly similar in both settings.

The role of ASCT has been explored in small series in the relapsed or refractory setting. The largest European experience using ASCT in WM reported a 5-year PFS of 49% and an OS of 69%, with a nonrelapse mortality of 4% at 1 year.<sup>20</sup> A more recent review by Gertz et al<sup>21</sup> showed that this strategy is effective but currently underutilized, possibly because of the high rate of toxicity and not being a curative strategy. In our study, four patients underwent ASCT after failing frontline therapy. Thus, although ASCT is available in the region, it is rarely used for WM.

In this study, both the median OS and PFS were not reached. At a 5-year follow-up, 81% of patients were alive and survival rates in those treated were 78% and 59% for OS and PFS, respectively. These results are similar to previous real-world reports.<sup>14,19</sup> In addition, we were able to validate the IPSSWM score in Latin American patients. We could not validate the revised IPSSWM scoring system because of inconsistency in lactate dehydrogenase reporting.<sup>22</sup> In our cohort, the use of rituximab did not seem to have an impact on survival. Clinical trials have shown improved responses and delayed disease progression with rituximab-based therapies.<sup>23,24</sup> However, neither randomized controlled studies nor observational studies have demonstrated improvement in OS.<sup>14,25-29</sup> A recent study using the US SEER

database identified a lower mortality risk in patients receiving rituximab-based regimens, but no difference in OS when comparing rituximab monotherapy versus combination with chemotherapy.<sup>30</sup> Although we cannot entirely explain our finding, residual confounding such as patient comorbidities, delayed diagnosis, and delayed access to therapy might have influenced the observed outcome. Therefore, we recommend that current therapy guidelines on the use of rituximab in WM should be followed.

We found a worse survival in males. Previous studies have described that males with WM have a worse survival and higher risk of mortality.<sup>19,31</sup> This study did not find an effective modification between males and females by IPSSWM score, treatment period, or type of treating institution. The observed outcome may indicate unmeasured confounders in the WM population not explained by high-risk disease, treatment variation over time, and the demographic variables accounted for in this study. Thus, further research is needed to understand this disparity.

Our study is limited by its retrospective nature. Patients were classified using archived records, laboratory, and pathology reports. The absence of a centralized pathology review in this international study lays a risk for selection bias. Similarly, response assessment was evaluated by each investigator, which is subjected to observer bias. However, our outcomes are consistent with previous studies. Our main strength is this study's multinational scale, which included patients seen at specialized cancer centers in Latin America.

In conclusion, to our knowledge, this is the first study to provide real-world data on WM in Latin America. We found that in Latin America, the management of WM is heterogeneous, with limited access to molecular testing and modern therapies. Despite that, outcomes were similar to those reported internationally. Moreover, we validated the IPSSWM score as a predictor of OS and PFS. We believe that the clinical information gathered in this cohort study should provide invaluable insight and guidance into treating this relatively rare and challenging disease, especially in resource-limited settings. Finally, there is an unmet need to improve access to recommended diagnostic approaches and therapies in our region.

## AFFILIATIONS

<sup>1</sup>Hematology Department, Hospital Británico & Hospital de Clínicas, Montevideo, Uruguay

<sup>2</sup>Hospital Universitario CEMIC, Buenos Aires, Argentina

<sup>3</sup>Department of Epidemiology, Milken Institute School of Public Health, The George Washington University, Washington, DC

<sup>4</sup>Fundaleu, Buenos Aires, Argentina

<sup>5</sup>Clínica Ruiz, Puebla, Mexico

<sup>6</sup>Hospital de Clínicas de Buenos Aires, Buenos Aires, Argentina

<sup>7</sup>Hospital Edgardo Rebagliati, Lima, Peru

<sup>8</sup>Hospital del Salvador, Santiago de Chile, Chile

<sup>9</sup>Instituto Nacional de Enfermedades Neoplásicas, Lima, Peru

<sup>10</sup>Hospital Central de las Fuerzas Armadas, Montevideo, Uruguay

<sup>11</sup>Hospital Israelita Albert Einstein, San Pablo, Brazil

<sup>12</sup>Hospital Italiano de La Plata, La Plata, Argentina

<sup>13</sup>Clinica Oncosalud-AUNA, Lima, Peru

<sup>14</sup>Hospital Nacional Alejandro Posadas, Buenos Aires, Argentina

<sup>15</sup>Hospital Guillermo Almenara, Lima, Peru

<sup>16</sup>Centro Médico Dr Ignacio Chavez, Hospital Fernando Ocaranza, Universidad del Valle, Mexico City, Mexico

<sup>17</sup>Hospital General de Mexico, Mexico City, Mexico

<sup>18</sup>Instituto de Investigaciones Médicas Alfredo Lanari, Buenos Aires, Argentina

<sup>19</sup>Hospital Regional PEMEX de Ciudad Madero, Ciudad Madero, Mexico

<sup>20</sup>Hospital Central Norte PEMEX, Mexico City, Mexico

<sup>21</sup>Centro Médico Julián Coronel, Cali, Colombia

<sup>22</sup>Instituto Nacional de Cancerología, Bogotá, Colombia

<sup>23</sup>Hospital Nacional Edgardo Rebagliati, Lima, Peru

<sup>24</sup>Hospital Teodoro Maldonado, Guayaquil, Ecuador

<sup>25</sup>Bing Center for Waldenström Macroglobulinemia, Dana Farber Cancer Institute, Boston, MA

<sup>26</sup>Division of Cancer Medicine, Department of Lymphoma and Myeloma, The University of Texas MD Anderson Cancer Center, Houston, TX

## CORRESPONDING AUTHOR

Eloísa Riva, MD, MEd, Hematology Department. Hospital Británico & Hospital de Clínicas, Alicante 1968, Montevideo, Uruguay; Twitter: @erivaserra; e-mail: eloisariva@hotmail.com.

## DATA SHARING STATEMENT

The data that support the findings of this study are available from the corresponding author, E.R., upon reasonable request.

## AUTHOR CONTRIBUTIONS

**Conception and design:** Eloísa Riva, Patricio José Duarte, Bryan Valcárcel, Guilherme Fleury-Perini, Efreem Montañó, Henry Idrobo, Brady E. Beltran, Jorge J. Castillo, Luis E. Malpica Castillo

**Provision of study materials or patients:** Eloísa Riva, Ivan Murrieta, Daniel del Carpio, Camila Peña, Jule Vásquez, Sebastian Yantorno, Sergio Lopresti, Milagros Altamirano, Guillermo J. Ruiz-Arguelles, Elia Zamora Pérez, Henry Idrobo, Humberto Martínez-Cordero

**Collection and assembly of data:** Eloísa Riva, Patricio José Duarte, Guillermina Remaggi, Ivan Murrieta, Ariel Corzo, Daniel del Carpio, Camila Peña, Jule Vásquez, Virginia Bove, Larissa Teixeira, Guilherme Fleury-Perini, Sebastian Yantorno, César Samáñez, Sergio Lopresti, Milagros Altamirano, Luis Vilella, Guillermo J. Ruiz-Arguelles, Guillermo J. Ruiz-Delgado, Efreem Montañó, Verónica Verri, Elia Zamora Pérez, Fernando Pérez Jacobo, Henry Idrobo, Humberto Martínez-Cordero, Brady E. Beltran, Johanna Ramírez, Luis E. Malpica Castillo

**Data analysis and interpretation:** Eloísa Riva, Patricio José Duarte, Bryan Valcárcel, Jorge J. Castillo, Luis E. Malpica Castillo

**Manuscript writing:** All authors

**Final approval of manuscript:** All authors

**Accountable for all aspects of the work:** All authors

## AUTHORS' DISCLOSURES OF POTENTIAL CONFLICTS OF INTEREST

The following represents disclosure information provided by authors of this manuscript. All relationships are considered compensated unless otherwise noted. Relationships are self-held unless noted. I = Immediate Family Member, Inst = My Institution. Relationships may not relate to the subject matter of this manuscript. For more information about ASCO's conflict of interest policy, please refer to [www.asco.org/rwc](http://www.asco.org/rwc) or [ascopubs.org/go/authors/author-center](http://ascopubs.org/go/authors/author-center).

Open Payments is a public database containing information reported by companies about payments made to US-licensed physicians ([Open Payments](http://OpenPayments)).

No potential conflicts of interest were reported.

## REFERENCES

- García-Sanz R, Montoto S, Torrequebrada A, et al: Waldenström macroglobulinaemia: Presenting features and outcome in a series with 217 cases. *Br J Haematol* 115:575-582, 2001
- Yin X, Chen L, Fan F, et al: Trends in incidence and mortality of Waldenström macroglobulinemia: A population-based study. *Front Oncol* 10:1712, 2020
- Dimopoulos MA, Kyle RA, Anagnostopoulos A, et al: Diagnosis and management of Waldenström's macroglobulinemia. *J Clin Oncol* 23:1564-1577, 2005
- Dimopoulos MA, Kastritis E, Owen RG, et al: Treatment recommendations for patients with Waldenström macroglobulinemia (WM) and related disorders: IWWM-7 consensus. *Blood* 124:1404-1411, 2014
- Nguyen-Khac F, Lambert J, Chapiro E, et al: Chromosomal aberrations and their prognostic value in a series of 174 untreated patients with Waldenström's macroglobulinemia. *Haematologica* 98:649-654, 2013
- Morel P, Duhamel A, Gobbi PG, et al: MYD88 L265P somatic mutation in Waldenström's macroglobulinemia. *Blood* 5:2654-2661, 2015
- Treon SP, Xu L, Yang G, et al: MYD88 L265P somatic mutation in Waldenström's macroglobulinemia. *N Engl J Med* 367:826-833, 2012
- Treon SP, Cao Y, Xu L, et al: Somatic mutations in MYD88 and CXCR4 are determinants of clinical presentation and overall survival in Waldenström macroglobulinemia. *Blood* 123:2791-2796, 2014
- Castillo JJ, Xu L, Gustine JN, et al: CXCR4 mutation subtypes impact response and survival outcomes in patients with Waldenström macroglobulinaemia treated with ibrutinib. *Br J Haematol* 187:356-363, 2019
- Castillo JJ, Advani RH, Branagan AR, et al: Consensus treatment recommendations from the tenth international Workshop for Waldenström macroglobulinaemia. *Lancet Haematol* 7:e827-e837, 2020
- Leblond V, Kastritis E, Advani R, et al: Treatment recommendations from the Eighth International Workshop on Waldenström's macroglobulinemia. *Blood* 128:1321-1328, 2016
- Morel P, Duhamel A, Gobbi P, et al: International Prognostic Scoring System for Waldenström macroglobulinemia. *Blood* 113:4163-4170, 2009
- Owen RG, Kyle RA, Stone MJ, et al: Response assessment in Waldenström macroglobulinaemia: Update from the VIth International Workshop. *Br J Haematol* 160:171-176, 2013
- Buske C, Sadullah S, Kastritis E, et al: Treatment and outcome patterns in European patients with Waldenström's macroglobulinaemia: A large, observational, retrospective chart review. *Lancet Haematol* 5:e299-309, 2018
- Gobbi PG, Baldini L, Broglia C, et al: Prognostic validation of the international classification of immunoglobulin M gammopathies: A survival advantage for patients with immunoglobulin M monoclonal gammopathy of undetermined significance? *Clin Cancer Res* 11:1786-1790, 2005
- Oza A, Rajkumar SV: Waldenström macroglobulinemia: Prognosis and management. *Blood Cancer J* 5:e296-e298, 2015
- Xu L, Tsakmaklis N, Yang G, et al: Acquired mutations associated with ibrutinib resistance in Waldenström macroglobulinemia. *Blood* 129:2519-2525, 2017
- Treon SP, Tripsas CK, Meid K, et al: Ibrutinib in previously treated Waldenström's macroglobulinemia. *N Engl J Med* 372:1430-1440, 2015
- Olszewski AJ, Treon SP, Castillo JJ: Evolution of management and outcomes in Waldenström macroglobulinemia: A population-based analysis. *Oncologist* 21:1377-1386, 2016
- Kyriakou C, Boumendil A, Finel H, et al: The impact of advanced patient age on mortality after allogeneic hematopoietic cell transplantation for non-Hodgkin's lymphoma: A retrospective study by the EBMT Lymphoma Working Party. *Bone Marrow Transplant* 25:86-93, 2019
- Gertz MA, Reeder CB, Kyle RA, et al: Stem cell transplant for Waldenström macroglobulinemia: An underutilized technique. *Bone Marrow Transplant* 47:1147-1153, 2012

22. Kastritis E, Morel P, Duhamel A, et al: A revised International Prognostic Score System for Waldenström's macroglobulinemia. *Leukemia* 33:2654-2661, 2019
23. Treon SP, Ioakimidis L, Soumerai JD, et al: Primary therapy of Waldenström macroglobulinemia with bortezomib, dexamethasone, and rituximab: WMCTG clinical trial 05-180. *J Clin Oncol* 27:3830-3835, 2009
24. Dimopoulos MA, Anagnostopoulos A, Kyrtsolis MC, et al: Primary treatment of Waldenström macroglobulinemia with dexamethasone, rituximab, and cyclophosphamide. *J Clin Oncol* 25:3344-3349, 2007
25. Buske C, Hoster E, Dreyling M, et al: The addition of rituximab to front-line therapy with CHOP (R-CHOP) results in a higher response rate and longer time to treatment failure in patients with lymphoplasmacytic lymphoma: Results of a randomized trial of the German Low-Grade Lymphoma Study Group (GLSG). *Leukemia* 23:153-161, 2009
26. Leblond V, Johnson S, Chevret S, et al: Results of a randomized trial of chlorambucil versus fludarabine for patients with untreated Waldenström macroglobulinemia, marginal zone lymphoma, or lymphoplasmacytic lymphoma. *J Clin Oncol* 31:301-307, 2013
27. Rummel MJ, Niederle N, Maschmeyer G, et al: Bendamustine plus rituximab versus CHOP plus rituximab as first-line treatment for patients with indolent and mantle-cell lymphomas: An open-label, multicentre, randomised, phase 3 non-inferiority trial. *Lancet* 381:1203-1210, 2013
28. Dimopoulos MA, Tedeschi A, Trotman J, et al: Phase 3 trial of ibrutinib plus rituximab in Waldenström's macroglobulinemia. *N Engl J Med* 378:2399-2410, 2018
29. Tam CS, Opat S, D'Sa S, et al: A randomized phase 3 trial of zanubrutinib vs ibrutinib in symptomatic Waldenström macroglobulinemia: The ASPEN study. *Blood* 136:2038-2050, 2020
30. Olszewski AJ, Chen C, Gutman R, et al: Comparative outcomes of immunochemotherapy regimens in Waldenström macroglobulinaemia. *Br J Haematol* 179:106-115, 2017
31. Kristinsson SY, Eloranta S, Dickman PW, et al: Patterns of survival in lymphoplasmacytic lymphoma/Waldenström macroglobulinemia: A population-based study of 1,555 patients diagnosed in Sweden from 1980 to 2005. *Am J Hematol* 88:60-65, 2013

